

SCALP

MIRRORS

SIGNAL

MANOEUVRE

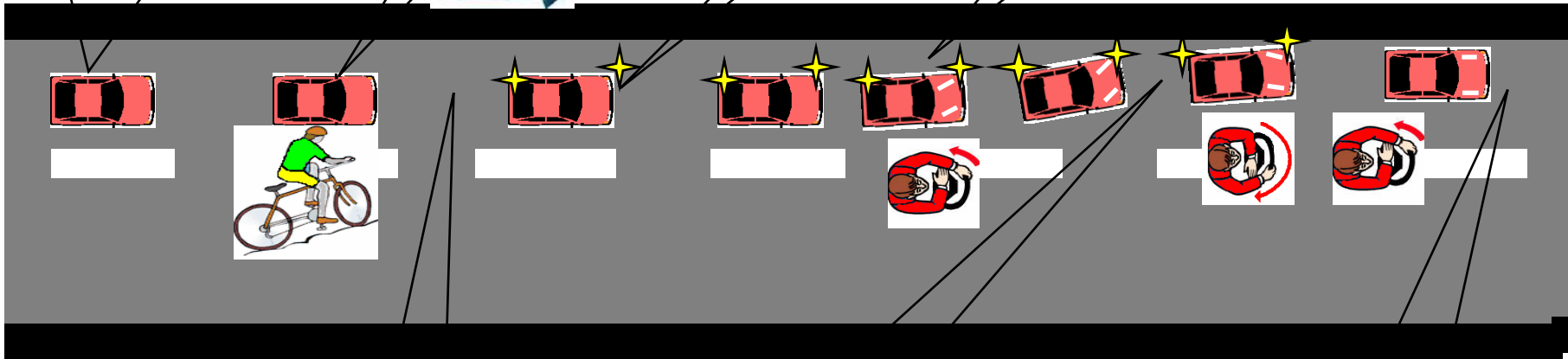
Using your **SCALP** routine decide on an appropriate place to pull-up. (The acronym SCALP stands for the words **s**afe, **c**onvenient **a**nd a **l**egal **p**lace).

A full list of places where you should and should not stop and park are given in your Highway Code, but the general rule is not to stop at a place where your vehicle will cause obstruction to traffic flow or to limit the visibility of other road users, for example near bends, junctions, pedestrian crossings or opposite parked vehicles

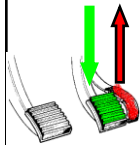
Before you start to pull in towards the pavement you must use your mirrors as there could be vehicles who are following you closely and may run-in to you from behind or smaller vehicles like bikes that may get trapped between you and the pavement.

Whether you signal or not will depend on what is going on around you. If there is a need to inform the road users around you including pedestrians then you must signal otherwise there is no need.

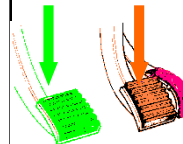
Steer the car in towards the pavement by about 1/4 turn. Let the car head in the direction of the pavement until you see the kerb disappear from the centre of the front windscreen, at this point undo the wheel turn and add the same amount towards the centre of the road. As the car straightens up near the kerb turn the wheel back to straight position before the car starts heading towards the middle of the road.



Ease off the gas and cover your brakes but do not brake unless you are exceptionally fast.



When you are about two car lengths from stopping squeeze the clutch and let the car gently roll until it comes to stand still, brake only if you are going to overshoot your intended stopping point.



Your car should stop about 10 to 15cm from the kerb. Once the car has stopped secure the car by applying the parking brakes and make the car safe by placing the gear lever in neutral.



How to park by the side of the road