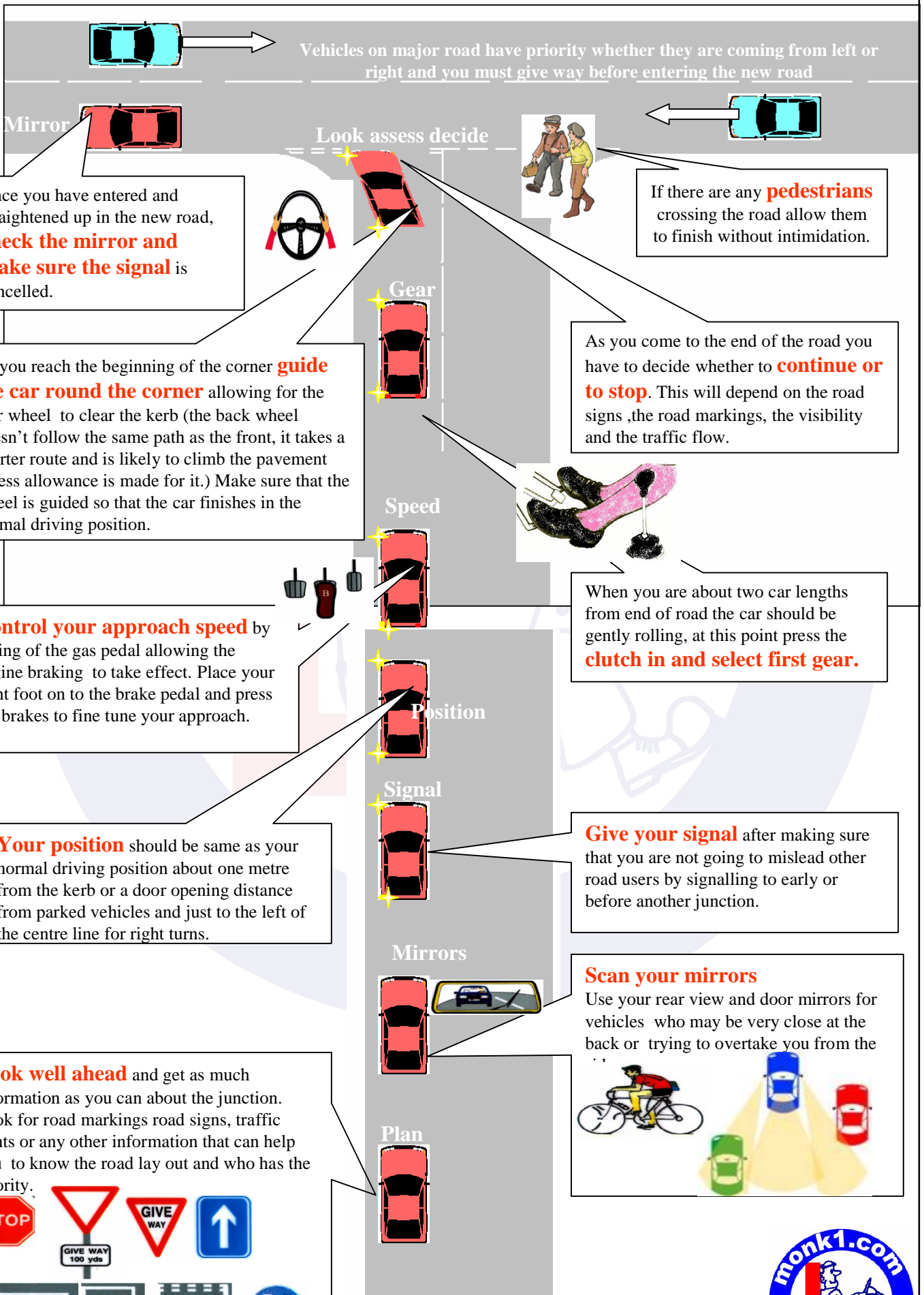


turn minor to major



Vehicles on major road have priority whether they are coming from left or right and you must give way before entering the new road

Mirror

Look assess decide

Once you have entered and straightened up in the new road, **check the mirror and make sure the signal** is cancelled.

If there are any **pedestrians** crossing the road allow them to finish without intimidation.

As you reach the beginning of the corner **guide the car round the corner** allowing for the rear wheel to clear the kerb (the back wheel doesn't follow the same path as the front, it takes a shorter route and is likely to climb the pavement unless allowance is made for it.) Make sure that the wheel is guided so that the car finishes in the normal driving position.

Gear

As you come to the end of the road you have to decide whether to **continue or to stop**. This will depend on the road signs, the road markings, the visibility and the traffic flow.

Speed

Control your approach speed by easing of the gas pedal allowing the engine braking to take effect. Place your right foot on to the brake pedal and press the brakes to fine tune your approach.

When you are about two car lengths from end of road the car should be gently rolling, at this point press the **clutch in and select first gear**.

Position

Your position should be same as your normal driving position about one metre from the kerb or a door opening distance from parked vehicles and just to the left of the centre line for right turns.

Signal

Give your signal after making sure that you are not going to mislead other road users by signalling to early or before another junction.

Mirrors

Scan your mirrors

Use your rear view and door mirrors for vehicles who may be very close at the back or trying to overtake you from the

Plan

Look well ahead and get as much information as you can about the junction. Look for road markings road signs, traffic lights or any other information that can help you to know the road lay out and who has the priority.

