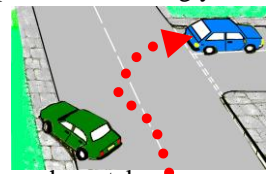


PLAN
Look for:
Signs & markings,
Gaps in property lines,
Gaps in lines of parked cars and/or
Any emerging traffic.

Before you take-up your position for a right turn recheck your side mirror and make sure that no other motorist is trying to shoot past you, especially motorbikes and mopeds.

When you are satisfied that the road is safe gradually guide the car so that it is positioned just to the left of the centre of the road, if there are road signs or markings you will need to adjust your position accordingly.



Once you have taken up your position make sure that you don't drift back towards the left as there could be other vehicles trying to overtake you from the left.

Avoid cutting right hand corners, it can be dangerous because there could be a fast on coming vehicle which may force you to swerve.

GEAR
Your choice of gear and the timing of the gear change will depend on the size of the road you are entering and whether you have to give way to on coming vehicles. Generally if you are required to stop then you will require first gear, however if you can continue without stopping then you should select the second gear about 3 car lengths from the turning

Coasting is when you are travelling with your clutch pedal pressed down or when your gear lever is in neutral. This can lead to you gaining speed when travelling down hills, consequently you having to brake harder to slowdown, this increases the risk of you locking your wheels thus increasing the possibility of skidding, or over shooting your turn; it is a dangerous practice and should be avoided as much as possible.

